

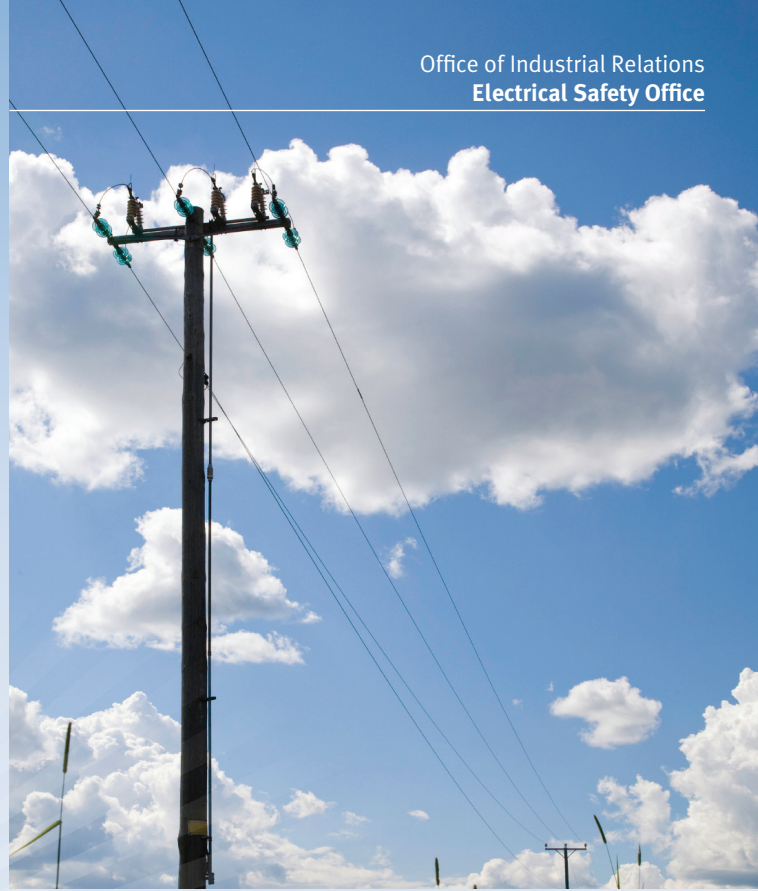
More information

Electrical Safety Office
electricalsafety.qld.gov.au
1300 362 128

Ergon Energy
ergon.com.au
13 74 66

Energex
energex.com.au
13 12 53

Powerlink Queensland
Powerlink.com.au
1800 635 369



Working safely near powerlines

Working near powerlines can be fatal. Touching them or straying into the exclusion zone around them can result in a serious electric shock.

If you must work near powerlines, you should follow these steps:

1. Develop a safe system of work before you start

- Develop a safe system that ensures a safe distance from powerlines is maintained (stay outside the exclusion zone).
- Identify overhead and underground powerlines by consulting maps and/or talking to the property owner and electrical entity.
- Conduct a site specific risk assessment – think about:
 - the type of plant and equipment/tools used
 - site and weather conditions
 - type of work being done
 - set-up and pack-up procedures.
- Put risk controls in place – the most effective way of controlling the risk is to de-energise the line for the duration of work where there is a risk of contact.

2. Keep your workers and contractors informed about electrical safety

- Induct and train your workers and contractors in safe work procedures, emergency procedures, and exclusion zones (Figure 1).

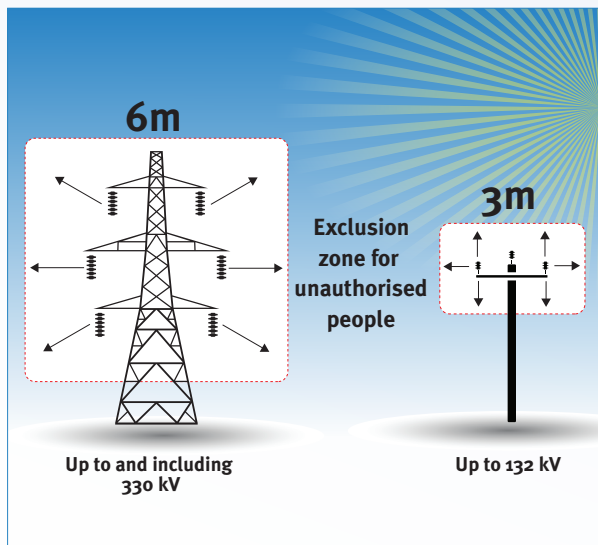


Figure 1.

- Carefully plan the tasks to be completed near powerlines and work away from them whenever possible.
 - Show your workers the safe distance from an exclusion zone a powerline by marking it on the ground.
 - Ensure people are aware that powerlines sag or sway in hot or windy weather (Figure 2).
- 3. Stay outside exclusion zones**
- Make powerlines and poles visible. Ask your electricity entity for permission to paint power poles and/or have them install markers or flags on the powerlines.
 - When tree cutting plan your work so tree branches do not fall across powerlines.
 - Where possible, use insulated or non-conductive tools and equipment.
 - Operators should use a safety observer when carrying out work near powerlines.
 - Follow the safety advice you obtain from your electricity entity.

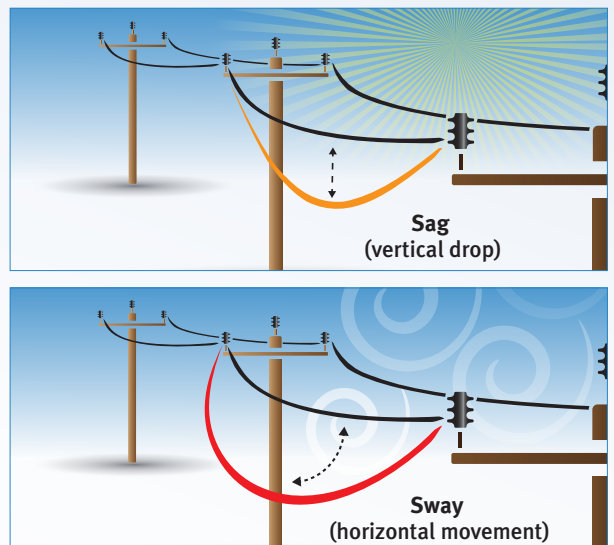


Figure 2.